



Rapid Building Evacuation Map Key

Disclaimer:

Digital map data sourced from Land Information New Zealand CROWN COPYRIGHT RESERVED.
The information displayed in the GIS has been taken from Whanganui District Council's databases and maps.
It is made available in good faith but its accuracy or completeness is not guaranteed. If the information is relied on in support of a resource consent it should be verified independently.

Scale: 1:19,000



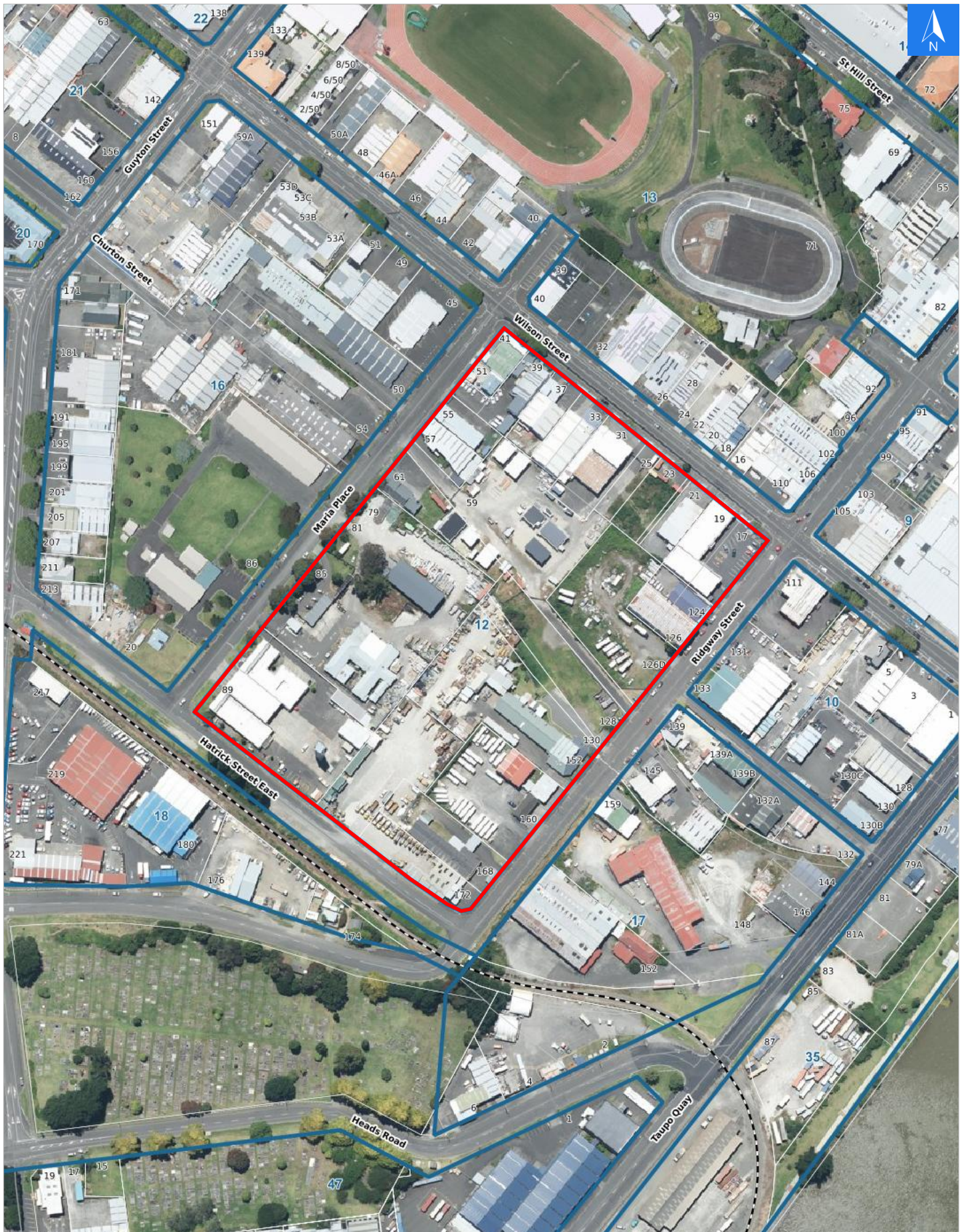


Disclaimer:

Digital map data sourced from Land Information New Zealand CROWN COPYRIGHT RESERVED.
The information displayed in the GIS has been taken from Whanganui District Council's databases and maps.
It is made available in good faith but its accuracy or completeness is not guaranteed. If the information is relied on in support of a resource consent it should be verified independently.

Wednesday, September 25, 2024

Scale 1: 3000





Wednesday, September 25, 2024

Disclaimer:

Digital map data sourced from Land Information New Zealand CROWN COPYRIGHT RESERVED.
The information displayed in the GIS has been taken from Whanganui District Council's databases and maps.
It is made available in good faith but its accuracy or completeness is not guaranteed. If the information is relied on in support of a resource consent it should be verified independently.

Rapid Building Assessment Evacuation Addresses

Data sourced from LINZ

LINZ Address	Name	Time Advised	Notes
51 Maria Place			
55 Maria Place			
57 Maria Place			
59 Maria Place			
61 Maria Place			
79 Maria Place			
81 Maria Place			
85 Maria Place			
89 Maria Place			
124 Ridgway Street			
126 Ridgway Street			
126D Ridgway Street			
128 Ridgway Street			
130 Ridgway Street			
152 Ridgway Street			
160 Ridgway Street			
168 Ridgway Street			
172 Ridgway Street			
17 Wilson Street			
19 Wilson Street			
21 Wilson Street			
23 Wilson Street			
25 Wilson Street			
31 Wilson Street			
33 Wilson Street			
37 Wilson Street			
39 Wilson Street			
41 Wilson Street			