



Rapid Building Evacuation Map Key

Disclaimer:

Digital map data sourced from Land Information New Zealand CROWN COPYRIGHT RESERVED.
The information displayed in the GIS has been taken from Whanganui District Council's databases and maps.
It is made available in good faith but its accuracy or completeness is not guaranteed. If the information is relied on in support of a resource consent it should be verified independently.

Scale: 1:19,000



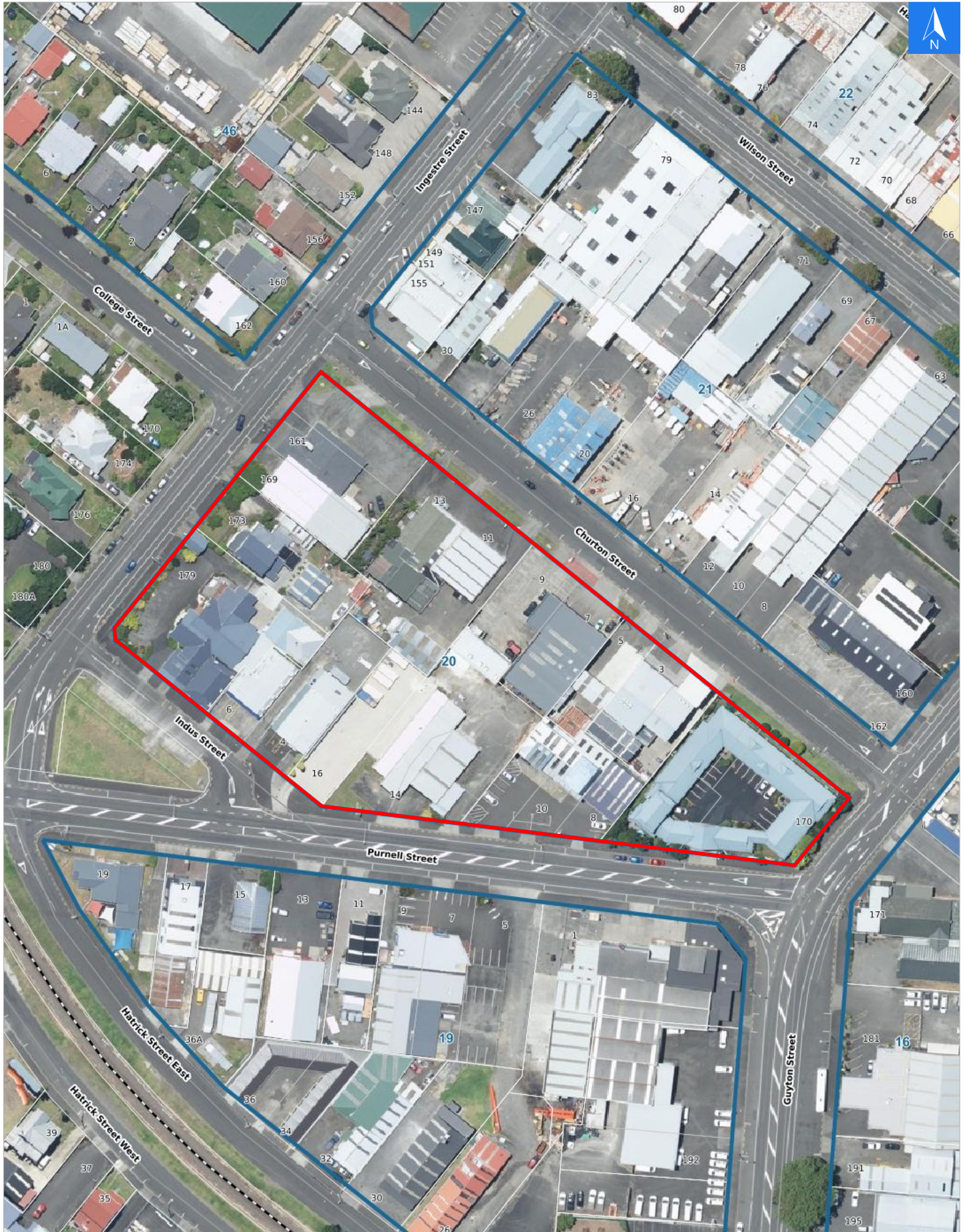


Disclaimer:

Digital map data sourced from Land Information New Zealand CROWN COPYRIGHT RESERVED. The information displayed in the GIS has been taken from Whanganui District Council's databases and maps. It is made available in good faith but its accuracy or completeness is not guaranteed. If the information is relied on in support of a resource consent it should be verified independently.

Wednesday, September 25, 2024

Scale 1: 1500





Wednesday, September 25, 2024

Disclaimer:

Digital map data sourced from Land Information New Zealand CROWN COPYRIGHT RESERVED.
The information displayed in the GIS has been taken from Whanganui District Council's databases and maps.
It is made available in good faith but its accuracy or completeness is not guaranteed. If the information is relied on in support of a resource consent it should be verified independently.

Rapid Building Assessment Evacuation Addresses

Data sourced from LINZ

| LINZ Address | Name | Time Advised | Notes |
|---------------------|-------------|-------------------------|--------------|
| 3 Churton Street | | | |
| 5 Churton Street | | | |
| 7 Churton Street | | | |
| 9 Churton Street | | | |
| 11 Churton Street | | | |
| 13 Churton Street | | | |
| 170 Guyton Street | | | |
| 4 Indus Street | | | |
| 6 Indus Street | | | |
| 161 Ingestre Street | | | |
| 169 Ingestre Street | | | |
| 173 Ingestre Street | | | |
| 179 Ingestre Street | | | |
| 8 Purnell Street | | | |
| 10 Purnell Street | | | |
| 14 Purnell Street | | | |
| 16 Purnell Street | | | |