

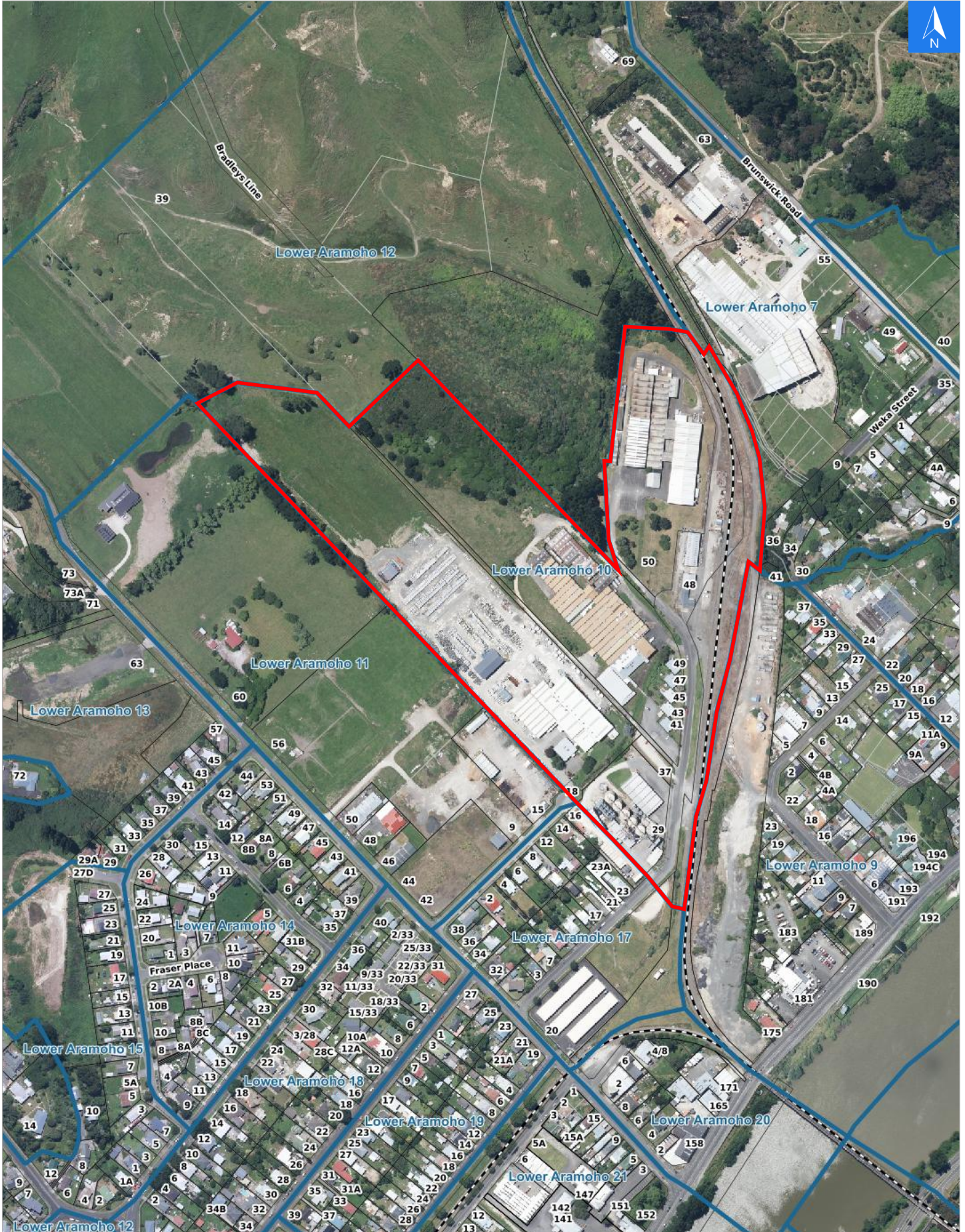


Wednesday, April 15, 2026

Disclaimer:

Digital map data sourced from Land Information New Zealand CROWN COPYRIGHT RESERVED.
The information displayed in the GIS has been taken from Whanganui District Council's databases and maps.
It is made available in good faith but its accuracy or completeness is not guaranteed. If the information is relied on in support of a resource consent it should be verified independently.

Scale 1: 5000





Wednesday, April 15, 2026

Disclaimer:

Digital map data sourced from Land Information New Zealand CROWN COPYRIGHT RESERVED.
The information displayed in the GIS has been taken from Whanganui District Council's databases and maps.
It is made available in good faith but its accuracy or completeness is not guaranteed. If the information is relied on in support of a resource consent it should be verified independently.

Rapid Urban Evacuation Addresses

Data sourced from LINZ

LINZ Address	Notes	Date Time Visited	Placard
29 Kelvin Street, Aramoho			W Y1 Y2 R1 R2
37 Kelvin Street, Aramoho			W Y1 Y2 R1 R2
41 Kelvin Street, Aramoho			W Y1 Y2 R1 R2
43 Kelvin Street, Aramoho			W Y1 Y2 R1 R2
45 Kelvin Street, Aramoho			W Y1 Y2 R1 R2
47 Kelvin Street, Aramoho			W Y1 Y2 R1 R2
48 Kelvin Street, Aramoho			W Y1 Y2 R1 R2
49 Kelvin Street, Aramoho			W Y1 Y2 R1 R2
50 Kelvin Street, Aramoho			W Y1 Y2 R1 R2
18 Murray Street, Aramoho			W Y1 Y2 R1 R2