

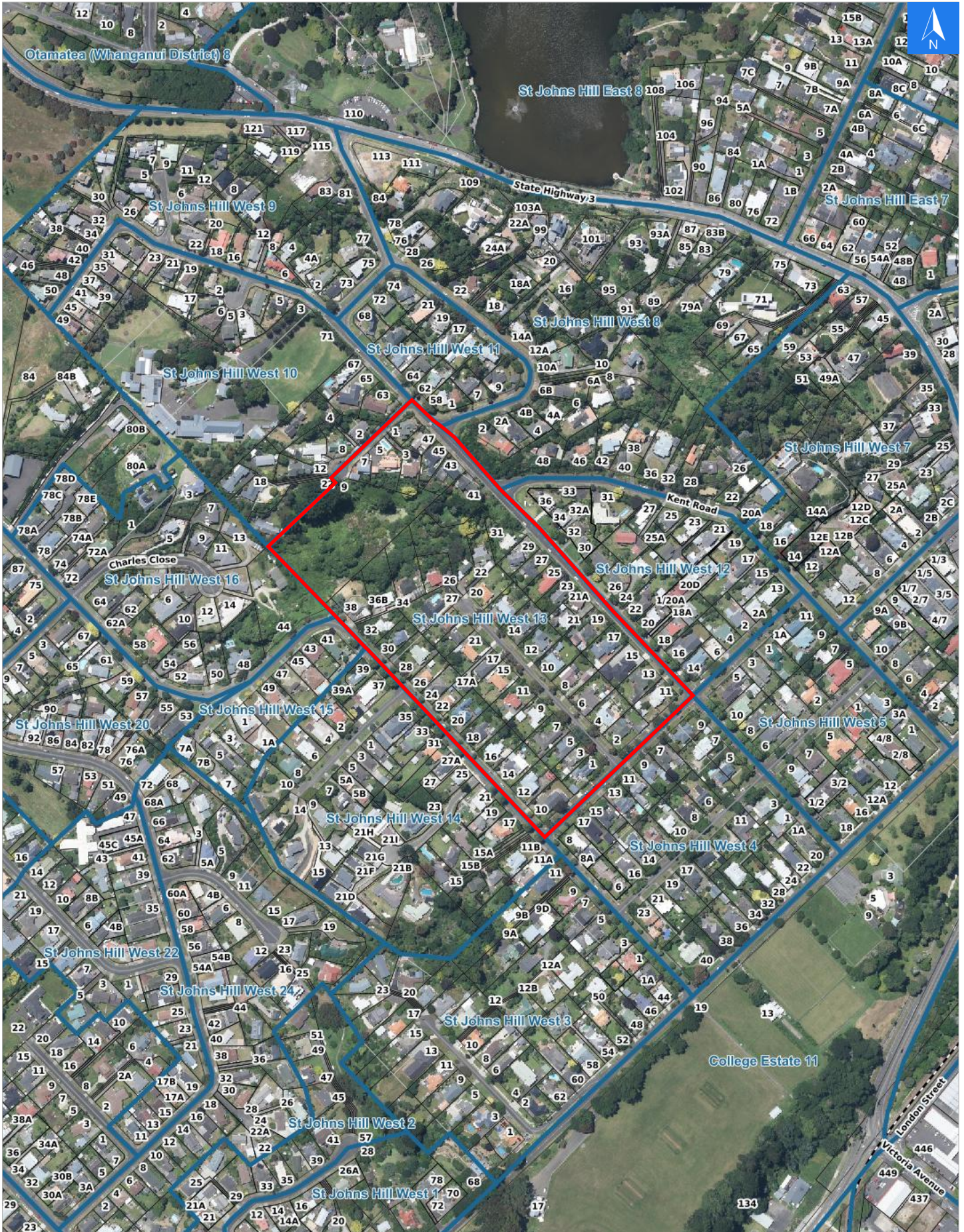


Disclaimer:

Digital map data sourced from Land Information New Zealand CROWN COPYRIGHT RESERVED.
The information displayed in the GIS has been taken from Whanganui District Council's databases and maps.
It is made available in good faith but its accuracy or completeness is not guaranteed. If the information is relied on in support of a resource consent it should be verified independently.

Wednesday, April 22, 2026

Scale 1: 5000





Wednesday, April 22, 2026

Disclaimer:

Digital map data sourced from Land Information New Zealand CROWN COPYRIGHT RESERVED.
The information displayed in the GIS has been taken from Whanganui District Council's databases and maps.
It is made available in good faith but its accuracy or completeness is not guaranteed. If the information is relied on in support of a resource consent it should be verified independently.

Rapid Urban Evacuation Addresses

Data sourced from LINZ

LINZ Address	Notes	Date Time Visited	Placard
1 Chittick Place, Saint Johns Hill			W Y1 Y2 R1 R2
3 Chittick Place, Saint Johns Hill			W Y1 Y2 R1 R2
5 Chittick Place, Saint Johns Hill			W Y1 Y2 R1 R2
7 Chittick Place, Saint Johns Hill			W Y1 Y2 R1 R2
9 Chittick Place, Saint Johns Hill			W Y1 Y2 R1 R2
11 Parkes Avenue, Saint Johns Hill			W Y1 Y2 R1 R2
13 Parkes Avenue, Saint Johns Hill			W Y1 Y2 R1 R2
15 Parkes Avenue, Saint Johns Hill			W Y1 Y2 R1 R2
17 Parkes Avenue, Saint Johns Hill			W Y1 Y2 R1 R2
19 Parkes Avenue, Saint Johns Hill			W Y1 Y2 R1 R2
21 Parkes Avenue, Saint Johns Hill			W Y1 Y2 R1 R2
21A Parkes Avenue, Saint Johns Hill			W Y1 Y2 R1 R2
23 Parkes Avenue, Saint Johns Hill			W Y1 Y2 R1 R2
25 Parkes Avenue, Saint Johns Hill			W Y1 Y2 R1 R2
27 Parkes Avenue, Saint Johns Hill			W Y1 Y2 R1 R2
29 Parkes Avenue, Saint Johns Hill			W Y1 Y2 R1 R2
31 Parkes Avenue, Saint Johns Hill			W Y1 Y2 R1 R2
41 Parkes Avenue, Saint Johns Hill			W Y1 Y2 R1 R2
43 Parkes Avenue, Saint Johns Hill			W Y1 Y2 R1 R2
45 Parkes Avenue, Saint Johns Hill			W Y1 Y2 R1 R2
47 Parkes Avenue, Saint Johns Hill			W Y1 Y2 R1 R2
10 Peakes Road, Saint Johns Hill			W Y1 Y2 R1 R2
12 Peakes Road, Saint Johns Hill			W Y1 Y2 R1 R2
14 Peakes Road, Saint Johns Hill			W Y1 Y2 R1 R2

LINZ Address	Notes	Date Time Visited	Placard
16 Peakes Road, Saint Johns Hill			W Y1 Y2 R1 R2
18 Peakes Road, Saint Johns Hill			W Y1 Y2 R1 R2
20 Peakes Road, Saint Johns Hill			W Y1 Y2 R1 R2
22 Peakes Road, Saint Johns Hill			W Y1 Y2 R1 R2
24 Peakes Road, Saint Johns Hill			W Y1 Y2 R1 R2
26 Peakes Road, Saint Johns Hill			W Y1 Y2 R1 R2
28 Peakes Road, Saint Johns Hill			W Y1 Y2 R1 R2
30 Peakes Road, Saint Johns Hill			W Y1 Y2 R1 R2
32 Peakes Road, Saint Johns Hill			W Y1 Y2 R1 R2
34 Peakes Road, Saint Johns Hill			W Y1 Y2 R1 R2
36A Peakes Road, Saint Johns Hill			W Y1 Y2 R1 R2
36B Peakes Road, Saint Johns Hill			W Y1 Y2 R1 R2
38 Peakes Road, Saint Johns Hill			W Y1 Y2 R1 R2
1 Taranaki Street, Saint Johns Hill			W Y1 Y2 R1 R2
2 Taranaki Street, Saint Johns Hill			W Y1 Y2 R1 R2
3 Taranaki Street, Saint Johns Hill			W Y1 Y2 R1 R2
4 Taranaki Street, Saint Johns Hill			W Y1 Y2 R1 R2
5 Taranaki Street, Saint Johns Hill			W Y1 Y2 R1 R2
6 Taranaki Street, Saint Johns Hill			W Y1 Y2 R1 R2
7 Taranaki Street, Saint Johns Hill			W Y1 Y2 R1 R2
8 Taranaki Street, Saint Johns Hill			W Y1 Y2 R1 R2
9 Taranaki Street, Saint Johns Hill			W Y1 Y2 R1 R2
10 Taranaki Street, Saint Johns Hill			W Y1 Y2 R1 R2
11 Taranaki Street, Saint Johns Hill			W Y1 Y2 R1 R2
12 Taranaki Street, Saint Johns Hill			W Y1 Y2 R1 R2
13 Taranaki Street, Saint Johns Hill			W Y1 Y2 R1 R2
14 Taranaki Street, Saint Johns Hill			W Y1 Y2 R1 R2
15 Taranaki Street, Saint Johns Hill			W Y1 Y2 R1 R2
16 Taranaki Street, Saint Johns Hill			W Y1 Y2 R1 R2
17 Taranaki Street, Saint Johns Hill			W Y1 Y2 R1 R2

LINZ Address	Notes	Date Time Visited	Placard
17A Taranaki Street, Saint Johns Hill			W Y1 Y2 R1 R2
18 Taranaki Street, Saint Johns Hill			W Y1 Y2 R1 R2
19 Taranaki Street, Saint Johns Hill			W Y1 Y2 R1 R2
20 Taranaki Street, Saint Johns Hill			W Y1 Y2 R1 R2
21 Taranaki Street, Saint Johns Hill			W Y1 Y2 R1 R2
22 Taranaki Street, Saint Johns Hill			W Y1 Y2 R1 R2
23 Taranaki Street, Saint Johns Hill			W Y1 Y2 R1 R2
24 Taranaki Street, Saint Johns Hill			W Y1 Y2 R1 R2
25 Taranaki Street, Saint Johns Hill			W Y1 Y2 R1 R2
26 Taranaki Street, Saint Johns Hill			W Y1 Y2 R1 R2
27 Taranaki Street, Saint Johns Hill			W Y1 Y2 R1 R2