

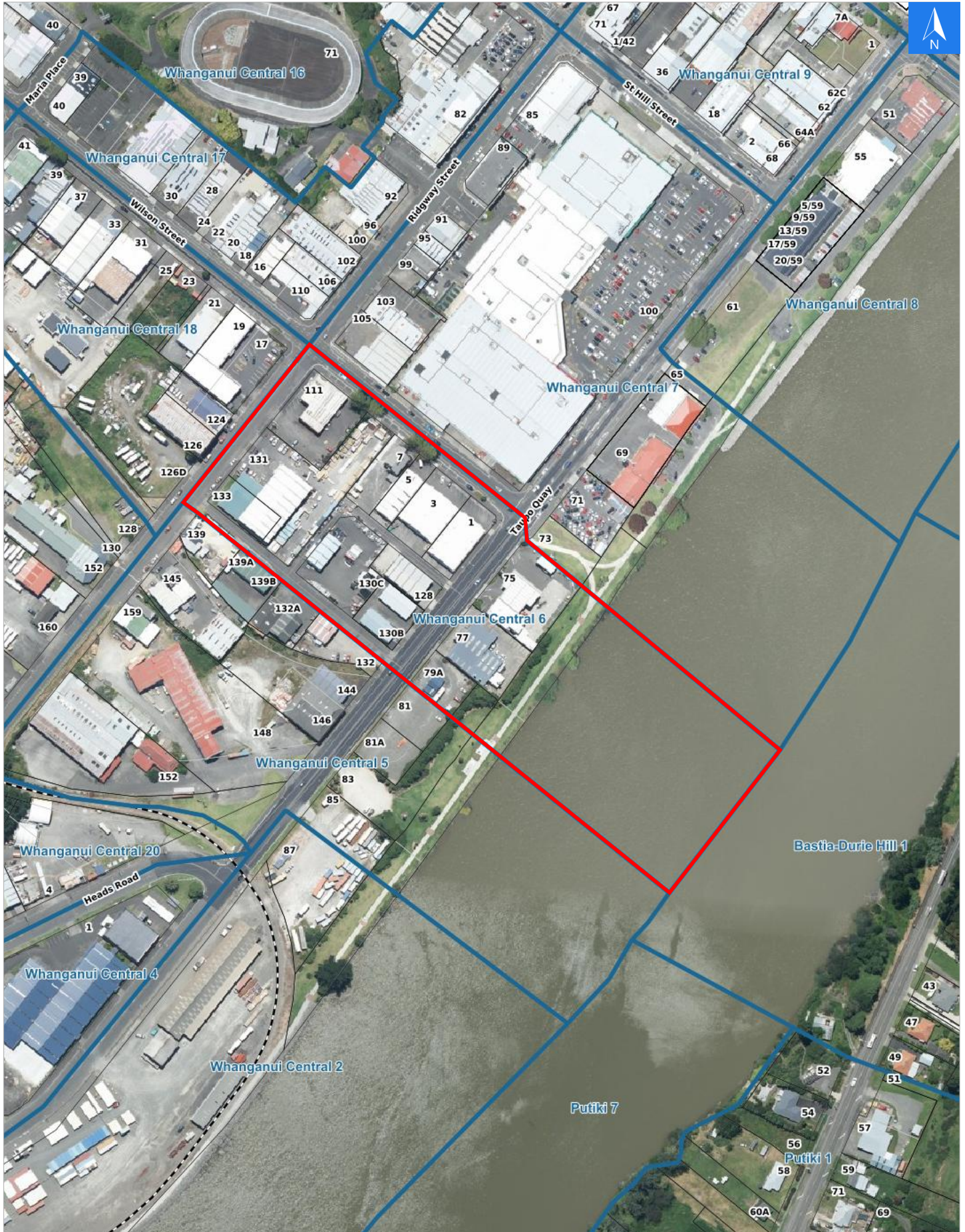


Wednesday, April 22, 2026

Disclaimer:

Digital map data sourced from Land Information New Zealand CROWN COPYRIGHT RESERVED. The information displayed in the GIS has been taken from Whanganui District Council's databases and maps. It is made available in good faith but its accuracy or completeness is not guaranteed. If the information is relied on in support of a resource consent it should be verified independently.

Scale 1: 3000





Wednesday, April 22, 2026

Disclaimer:

Digital map data sourced from Land Information New Zealand CROWN COPYRIGHT RESERVED.
The information displayed in the GIS has been taken from Whanganui District Council's databases and maps.
It is made available in good faith but its accuracy or completeness is not guaranteed. If the information is relied on in support of a resource consent it should be verified independently.

Rapid Urban Evacuation Addresses

Data sourced from LINZ

LINZ Address	Notes	Date Time Visited	Placard
111 Ridgway Street			W Y1 Y2 R1 R2
131 Ridgway Street			W Y1 Y2 R1 R2
133 Ridgway Street			W Y1 Y2 R1 R2
75 Taupo Quay			W Y1 Y2 R1 R2
77 Taupo Quay			W Y1 Y2 R1 R2
79A Taupo Quay			W Y1 Y2 R1 R2
128 Taupo Quay			W Y1 Y2 R1 R2
130 Taupo Quay			W Y1 Y2 R1 R2
130B Taupo Quay			W Y1 Y2 R1 R2
130C Taupo Quay			W Y1 Y2 R1 R2
1 Wilson Street			W Y1 Y2 R1 R2
3 Wilson Street			W Y1 Y2 R1 R2
5 Wilson Street			W Y1 Y2 R1 R2
7 Wilson Street			W Y1 Y2 R1 R2