

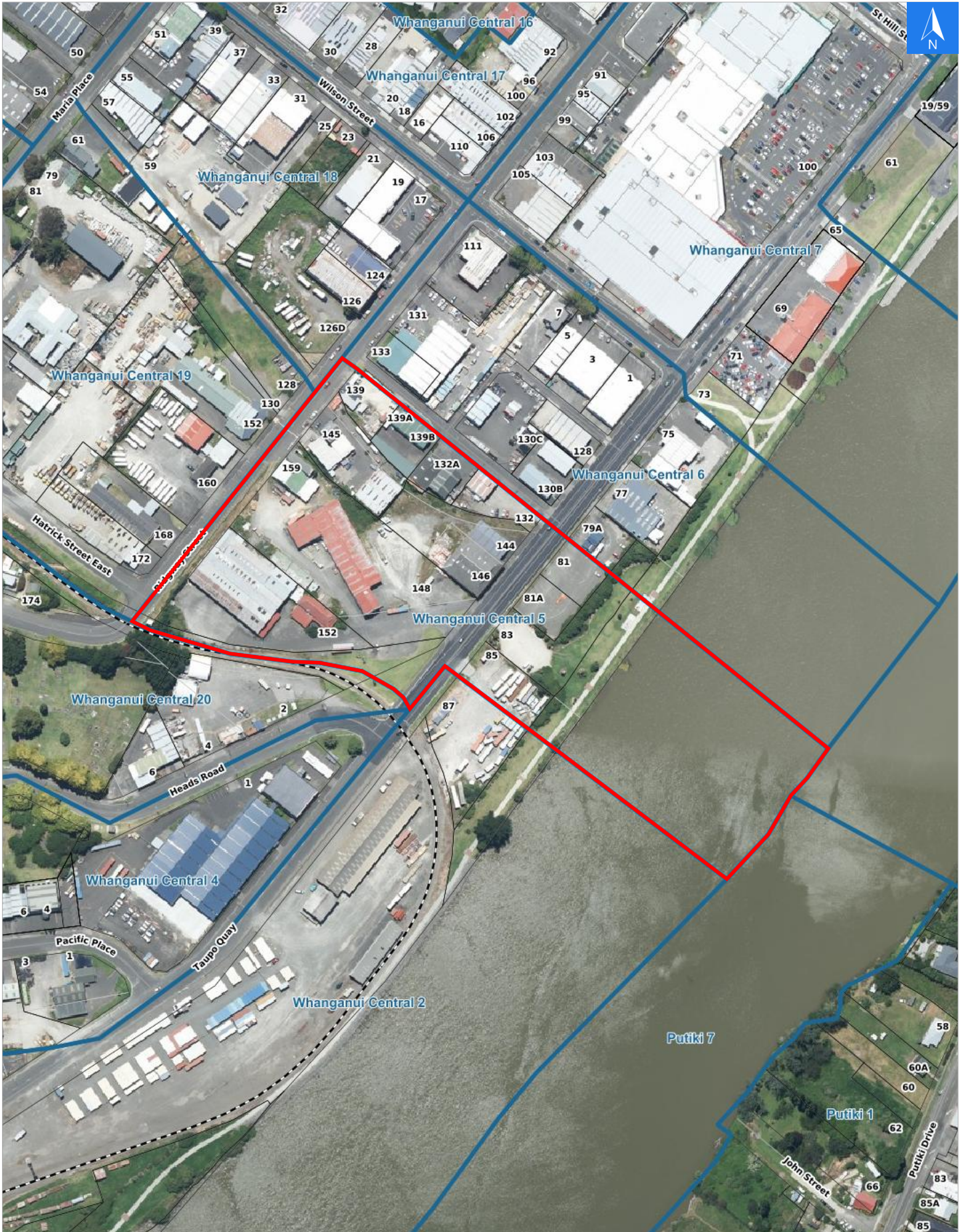


Wednesday, April 22, 2026

Disclaimer:

Digital map data sourced from Land Information New Zealand CROWN COPYRIGHT RESERVED.
The information displayed in the GIS has been taken from Whanganui District Council's databases and maps.
It is made available in good faith but its accuracy or completeness is not guaranteed. If the information is relied on in support of a resource consent it should be verified independently.

Scale 1: 3000





Wednesday, April 22, 2026

Disclaimer:

Digital map data sourced from Land Information New Zealand CROWN COPYRIGHT RESERVED.
The information displayed in the GIS has been taken from Whanganui District Council's databases and maps.
It is made available in good faith but its accuracy or completeness is not guaranteed. If the information is relied on in support of a resource consent it should be verified independently.

Rapid Urban Evacuation Addresses

Data sourced from LINZ

LINZ Address	Notes	Date Time Visited	Placard
139 Ridgway Street			W Y1 Y2 R1 R2
139A Ridgway Street			W Y1 Y2 R1 R2
139B Ridgway Street			W Y1 Y2 R1 R2
143 Ridgway Street			W Y1 Y2 R1 R2
145 Ridgway Street			W Y1 Y2 R1 R2
159 Ridgway Street			W Y1 Y2 R1 R2
81 Taupo Quay			W Y1 Y2 R1 R2
81A Taupo Quay			W Y1 Y2 R1 R2
83 Taupo Quay			W Y1 Y2 R1 R2
85 Taupo Quay			W Y1 Y2 R1 R2
132 Taupo Quay			W Y1 Y2 R1 R2
132A Taupo Quay			W Y1 Y2 R1 R2
144 Taupo Quay			W Y1 Y2 R1 R2
146 Taupo Quay			W Y1 Y2 R1 R2
148 Taupo Quay			W Y1 Y2 R1 R2
152 Taupo Quay			W Y1 Y2 R1 R2