

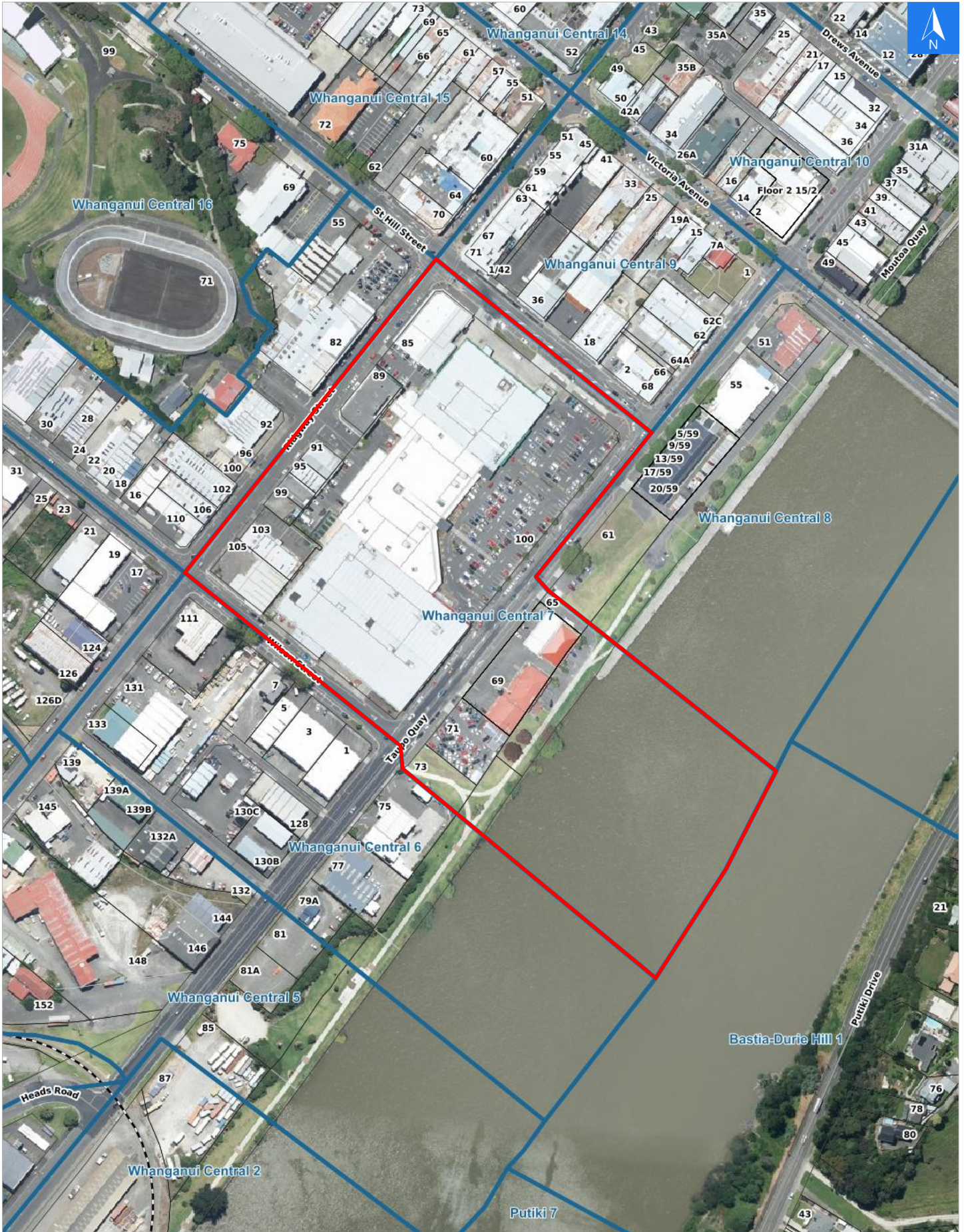


Disclaimer:

Digital map data sourced from Land Information New Zealand CROWN COPYRIGHT RESERVED. The information displayed in the GIS has been taken from Whanganui District Council's databases and maps. It is made available in good faith but its accuracy or completeness is not guaranteed. If the information is relied on in support of a resource consent it should be verified independently.

Wednesday, April 15, 2026

Scale 1: 3000





Wednesday, April 15, 2026

Disclaimer:

Digital map data sourced from Land Information New Zealand CROWN COPYRIGHT RESERVED.  
The information displayed in the GIS has been taken from Whanganui District Council's databases and maps.  
It is made available in good faith but its accuracy or completeness is not guaranteed. If the information is relied on in support of a resource consent it should be verified independently.

## Rapid Urban Evacuation Addresses

Data sourced from LINZ

LINZ Address	Notes	Date Time Visited	Placard
81 Ridgway Street			W Y1 Y2 R1 R2
85 Ridgway Street			W Y1 Y2 R1 R2
89 Ridgway Street			W Y1 Y2 R1 R2
91 Ridgway Street			W Y1 Y2 R1 R2
95 Ridgway Street			W Y1 Y2 R1 R2
99 Ridgway Street			W Y1 Y2 R1 R2
103 Ridgway Street			W Y1 Y2 R1 R2
105 Ridgway Street			W Y1 Y2 R1 R2
65 Taupo Quay			W Y1 Y2 R1 R2
69 Taupo Quay			W Y1 Y2 R1 R2
71 Taupo Quay			W Y1 Y2 R1 R2
73 Taupo Quay			W Y1 Y2 R1 R2
100 Taupo Quay			W Y1 Y2 R1 R2