

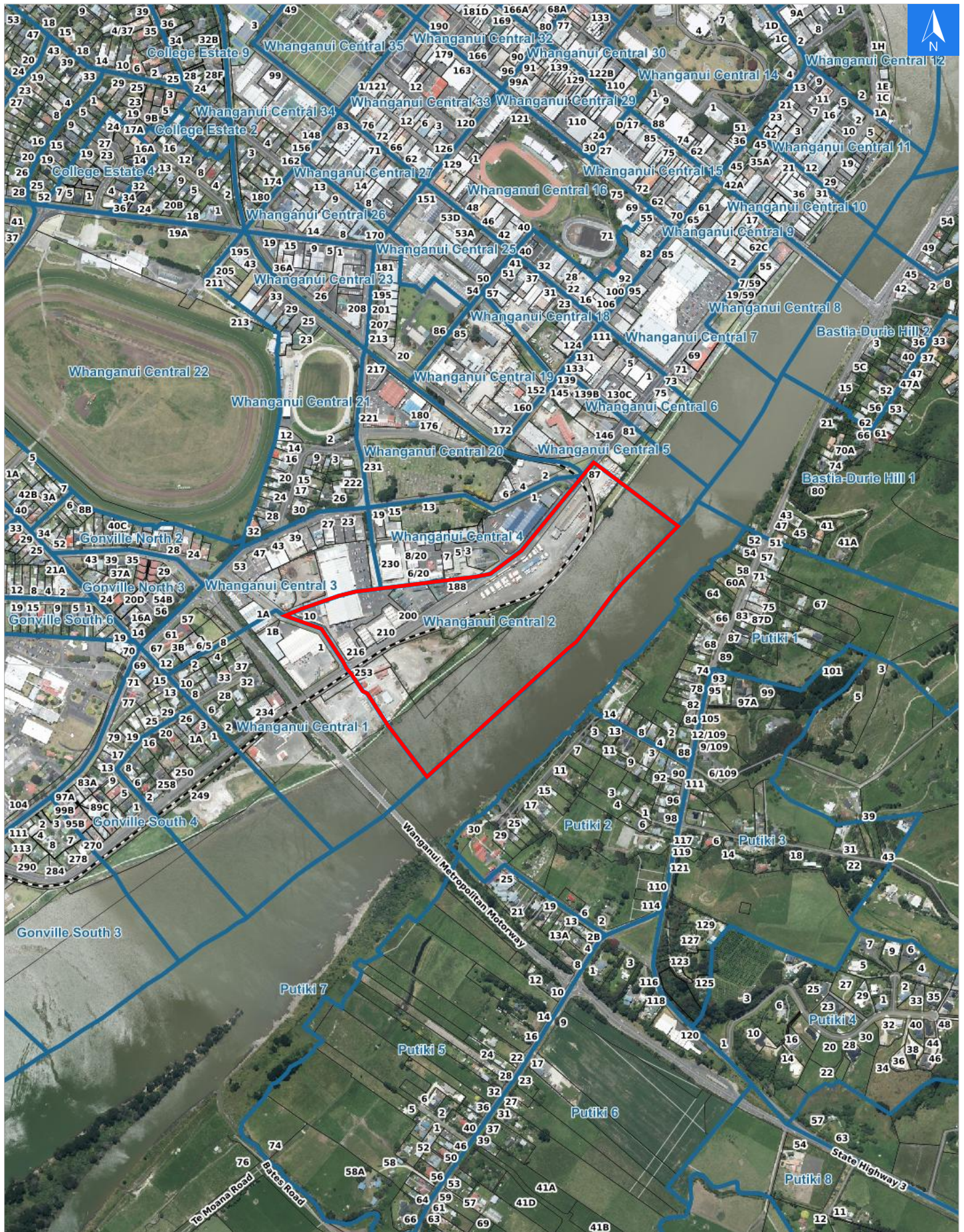


Disclaimer:

Digital map data sourced from Land Information New Zealand CROWN COPYRIGHT RESERVED. The information displayed in the GIS has been taken from Whanganui District Council's databases and maps. It is made available in good faith but its accuracy or completeness is not guaranteed. If the information is relied on in support of a resource consent it should be verified independently.

Wednesday, April 22, 2026

Scale 1: 10000





Wednesday, April 22, 2026

Disclaimer:

Digital map data sourced from Land Information New Zealand CROWN COPYRIGHT RESERVED.
The information displayed in the GIS has been taken from Whanganui District Council's databases and maps.
It is made available in good faith but its accuracy or completeness is not guaranteed. If the information is relied on in support of a resource consent it should be verified independently.

Rapid Urban Evacuation Addresses

Data sourced from LINZ

LINZ Address	Notes	Date Time Visited	Placard
10 Liffiton Street, Gonville			W Y1 Y2 R1 R2
87 Taupo Quay			W Y1 Y2 R1 R2
188 Taupo Quay, Gonville			W Y1 Y2 R1 R2
190 Taupo Quay, Gonville			W Y1 Y2 R1 R2
200 Taupo Quay, Gonville			W Y1 Y2 R1 R2
210 Taupo Quay, Gonville			W Y1 Y2 R1 R2
216 Taupo Quay, Gonville			W Y1 Y2 R1 R2
253 Taupo Quay, Gonville			W Y1 Y2 R1 R2