



Rapid Building Evacuation Map Key

Disclaimer:

Digital map data sourced from Land Information New Zealand CROWN COPYRIGHT RESERVED.
The information displayed in the GIS has been taken from Whanganui District Council's databases and maps.
It is made available in good faith but its accuracy or completeness is not guaranteed. If the information is relied on in support of a resource consent it should be verified independently.

Scale: 1:19,000



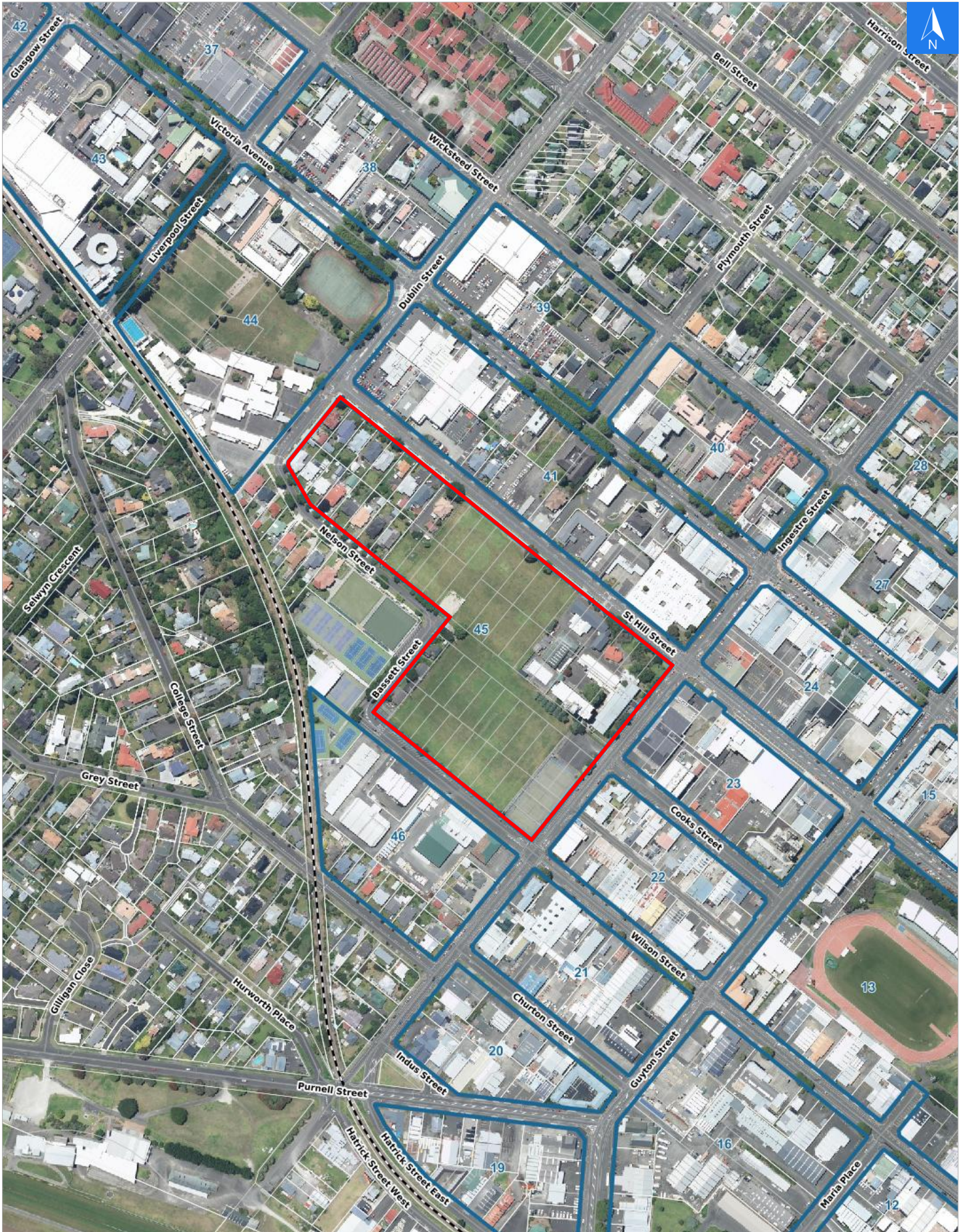


Disclaimer:

Digital map data sourced from Land Information New Zealand CROWN COPYRIGHT RESERVED. The information displayed in the GIS has been taken from Whanganui District Council's databases and maps. It is made available in good faith but its accuracy or completeness is not guaranteed. If the information is relied on in support of a resource consent it should be verified independently.

Wednesday, September 25, 2024

Scale 1: 5000





Wednesday, September 25, 2024

Disclaimer:

Digital map data sourced from Land Information New Zealand CROWN COPYRIGHT RESERVED.
The information displayed in the GIS has been taken from Whanganui District Council's databases and maps.
It is made available in good faith but its accuracy or completeness is not guaranteed. If the information is relied on in support of a resource consent it should be verified independently.

Rapid Building Assessment Evacuation Addresses

Data sourced from LINZ

LINZ Address	Name	Time Advised	Notes
84 Ingestre Street			
49 Nelson Street			
52 Nelson Street			
54 Nelson Street			
56 Nelson Street			
58 Nelson Street			
60 Nelson Street			
62 Nelson Street			
64 Nelson Street			
66 Nelson Street			
267 St Hill Street			
269 St Hill Street			
273 St Hill Street			
279 St Hill Street			
283 St Hill Street			
287 St Hill Street			
293 St Hill Street			
297 St Hill Street			
299 St Hill Street			