

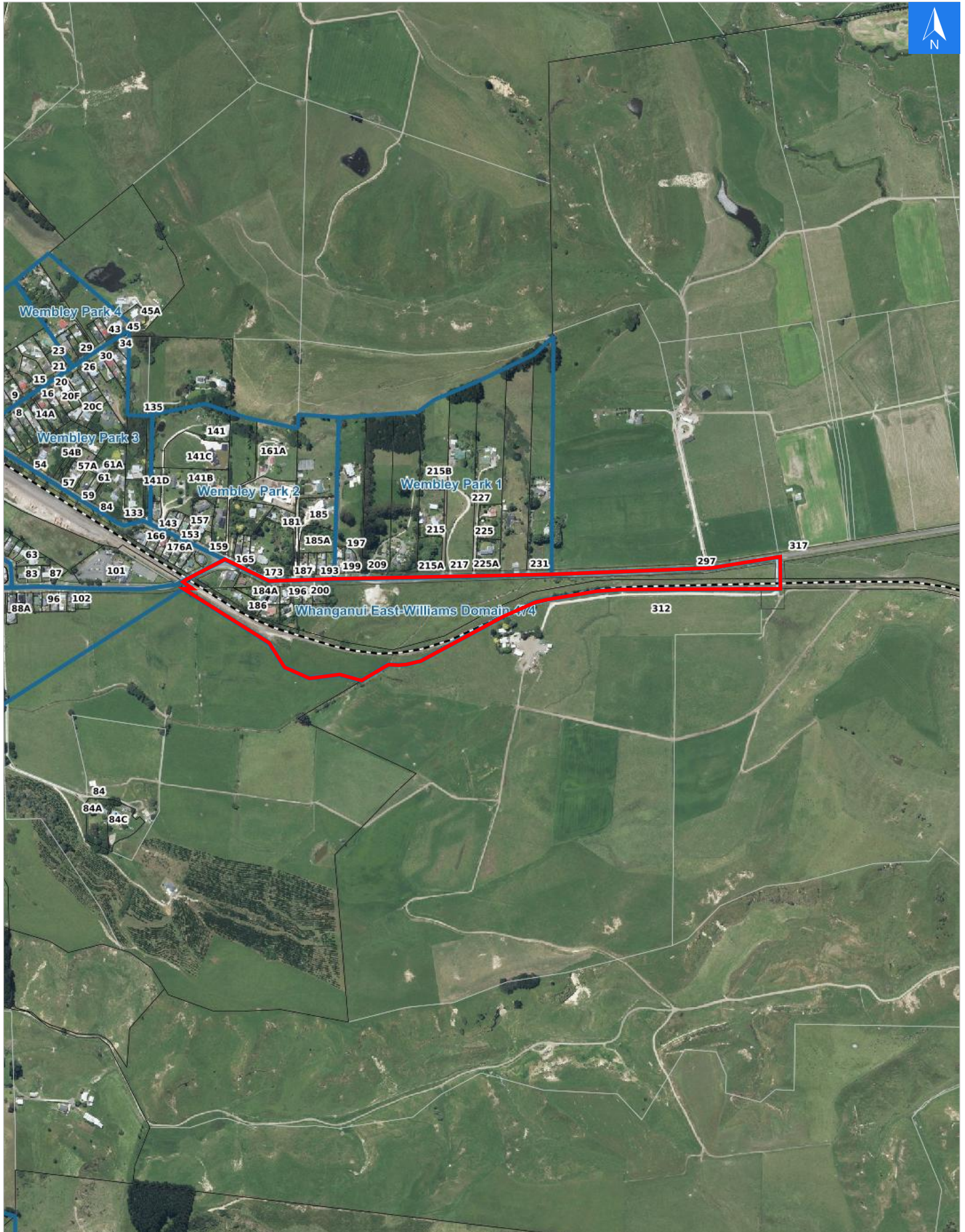


Disclaimer:

Digital map data sourced from Land Information New Zealand CROWN COPYRIGHT RESERVED.  
The information displayed in the GIS has been taken from Whanganui District Council's databases and maps.  
It is made available in good faith but its accuracy or completeness is not guaranteed. If the information is relied on in support of a resource consent it should be verified independently.

Wednesday, April 22, 2026

Scale 1: 10000





**Wednesday, April 22, 2026**

**Disclaimer:**

Digital map data sourced from Land Information New Zealand CROWN COPYRIGHT RESERVED.  
The information displayed in the GIS has been taken from Whanganui District Council's databases and maps.  
It is made available in good faith but its accuracy or completeness is not guaranteed. If the information is relied on in support of a resource consent it should be verified independently.

**Rapid Urban Evacuation Addresses**

Data sourced from LINZ

<b>LINZ Address</b>	<b>Notes</b>	<b>Date Time Visited</b>	<b>Placard</b>
182 No 3 Line, Whanganui East			W Y1 Y2 R1 R2
184 No 3 Line, Whanganui East			W Y1 Y2 R1 R2
184A No 3 Line, Whanganui East			W Y1 Y2 R1 R2
186 No 3 Line, Whanganui East			W Y1 Y2 R1 R2
188 No 3 Line, Whanganui East			W Y1 Y2 R1 R2
190 No 3 Line, Whanganui East			W Y1 Y2 R1 R2
192 No 3 Line, Whanganui East			W Y1 Y2 R1 R2
194 No 3 Line, Whanganui East			W Y1 Y2 R1 R2
196 No 3 Line, Whanganui East			W Y1 Y2 R1 R2
198 No 3 Line, Whanganui East			W Y1 Y2 R1 R2
200 No 3 Line, Whanganui East			W Y1 Y2 R1 R2