

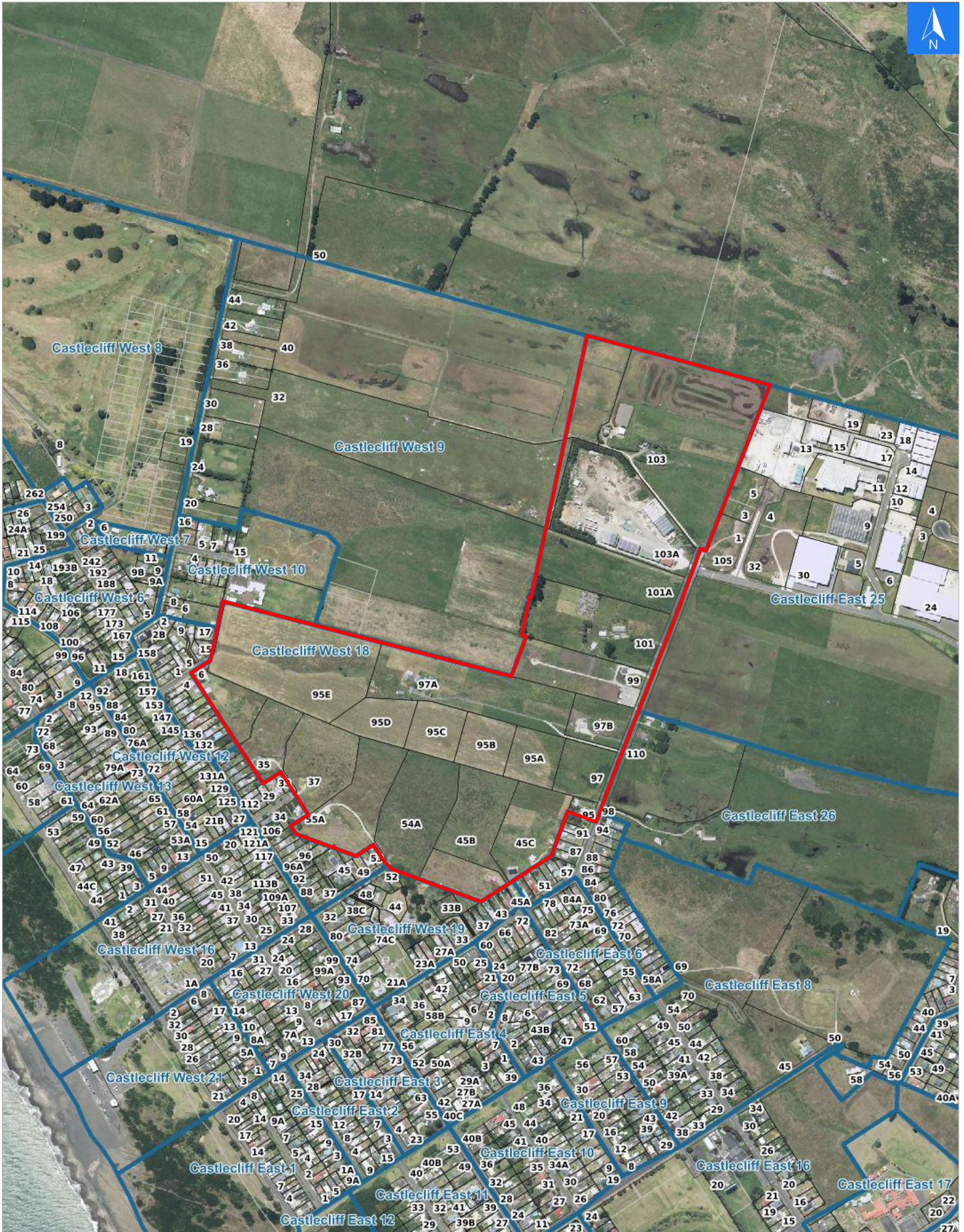


Disclaimer:

Digital map data sourced from Land Information New Zealand CROWN COPYRIGHT RESERVED.
The information displayed in the GIS has been taken from Whanganui District Council's databases and maps.
It is made available in good faith but its accuracy or completeness is not guaranteed. If the information is relied on in support of a resource consent it should be verified independently.

Wednesday, April 15, 2026

Scale 1: 10000





Wednesday, April 15, 2026

Disclaimer:

Digital map data sourced from Land Information New Zealand CROWN COPYRIGHT RESERVED.
The information displayed in the GIS has been taken from Whanganui District Council's databases and maps.
It is made available in good faith but its accuracy or completeness is not guaranteed. If the information is relied on in support of a resource consent it should be verified independently.

Rapid Urban Evacuation Addresses

Data sourced from LINZ

LINZ Address	Notes	Date Time Visited	Placard
6 Kamahi Street, Castlecliff			W Y1 Y2 R1 R2
35 Karewa Street, Castlecliff			W Y1 Y2 R1 R2
37 Karewa Street, Castlecliff			W Y1 Y2 R1 R2
95 Manuka Street, Castlecliff			W Y1 Y2 R1 R2
97 Manuka Street, Castlecliff			W Y1 Y2 R1 R2
97A Manuka Street, Castlecliff			W Y1 Y2 R1 R2
97B Manuka Street, Castlecliff			W Y1 Y2 R1 R2
99 Manuka Street, Castlecliff			W Y1 Y2 R1 R2
101 Manuka Street, Castlecliff			W Y1 Y2 R1 R2
101A Manuka Street, Castlecliff			W Y1 Y2 R1 R2
103 Manuka Street, Castlecliff			W Y1 Y2 R1 R2
103A Manuka Street, Castlecliff			W Y1 Y2 R1 R2