

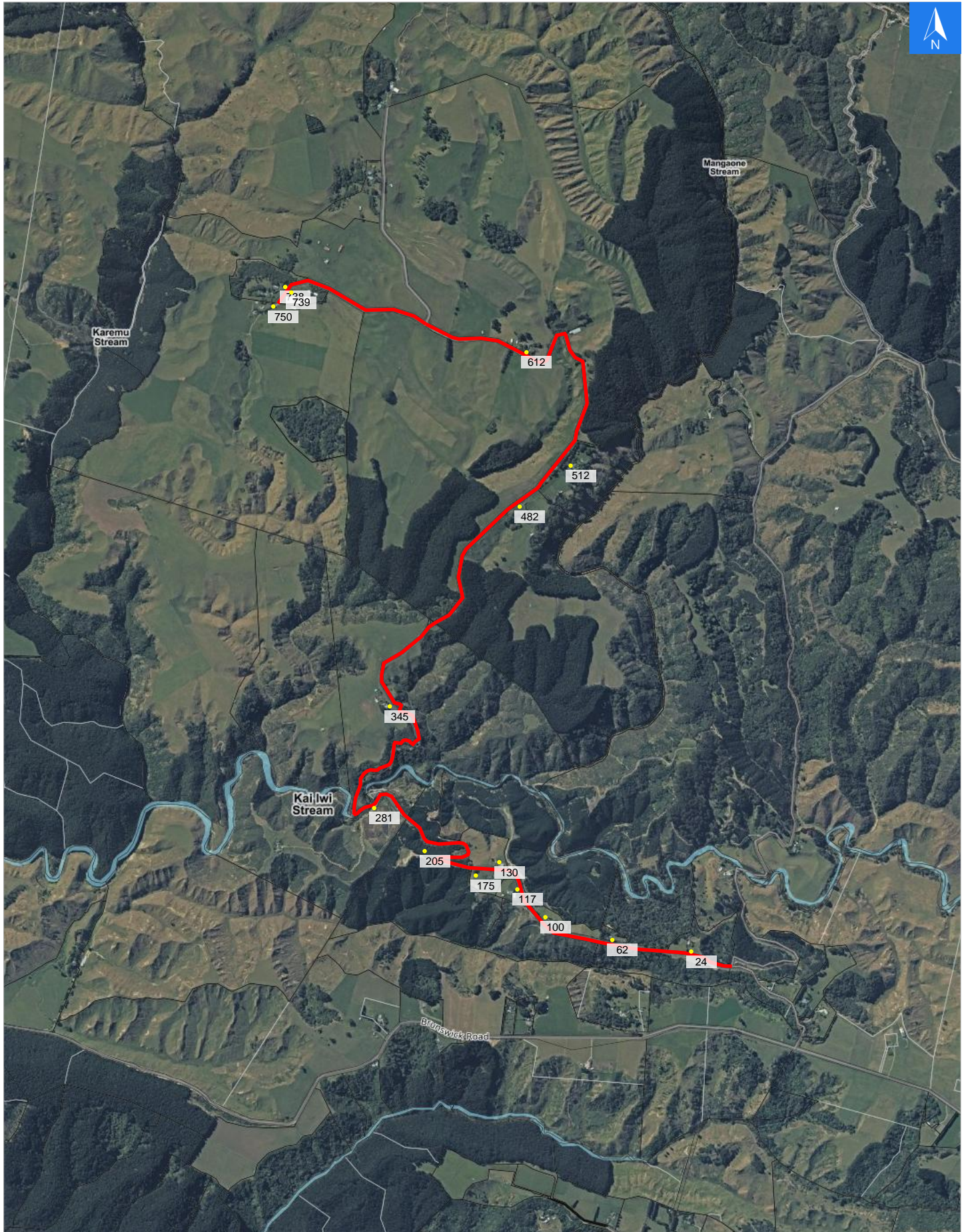


Wednesday, September 25, 2024

Disclaimer:

Digital map data sourced from Land Information New Zealand CROWN COPYRIGHT RESERVED.
The information displayed in the GIS has been taken from Whanganui District Council's databases and maps.
It is made available in good faith but its accuracy or completeness is not guaranteed. If the information is relied on in support of a resource consent it should be verified independently.

Scale 1: 25000





Wednesday, September 25, 2024

Disclaimer:

Digital map data sourced from Land Information New Zealand CROWN COPYRIGHT RESERVED.
The information displayed in the GIS has been taken from Whanganui District Council's databases and maps.
It is made available in good faith but its accuracy or completeness is not guaranteed. If the information is relied on in support of a resource consent it should be verified independently.

Road Evacuation Addresses

Data sourced from LINZ

LINZ Address	Notes	Date Time Visited	Placard
24 Koatanui Road, Brunswick			W Y1 Y2 R1 R2
62 Koatanui Road, Brunswick			W Y1 Y2 R1 R2
100 Koatanui Road, Brunswick			W Y1 Y2 R1 R2
117 Koatanui Road, Brunswick			W Y1 Y2 R1 R2
130 Koatanui Road, Brunswick			W Y1 Y2 R1 R2
175 Koatanui Road, Brunswick			W Y1 Y2 R1 R2
205 Koatanui Road, Brunswick			W Y1 Y2 R1 R2
281 Koatanui Road, Kai Iwi, Whanganui			W Y1 Y2 R1 R2
345 Koatanui Road, Brunswick			W Y1 Y2 R1 R2
482 Koatanui Road, Brunswick			W Y1 Y2 R1 R2
512 Koatanui Road, Brunswick			W Y1 Y2 R1 R2
612 Koatanui Road, Brunswick			W Y1 Y2 R1 R2
738 Koatanui Road, Brunswick			W Y1 Y2 R1 R2
739 Koatanui Road, Brunswick			W Y1 Y2 R1 R2
750 Koatanui Road, Brunswick			W Y1 Y2 R1 R2