

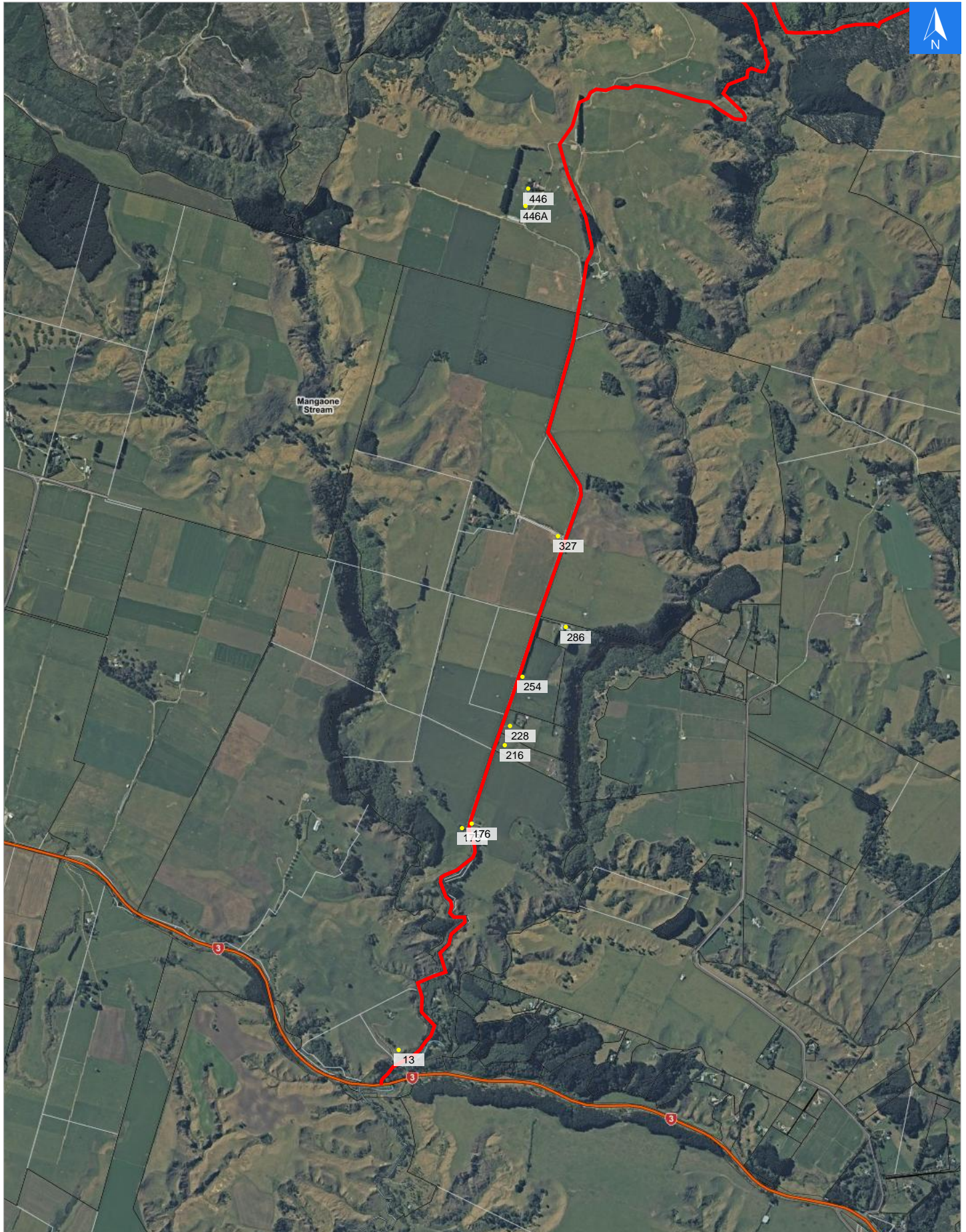


Wednesday, September 25, 2024

Disclaimer:

Digital map data sourced from Land Information New Zealand CROWN COPYRIGHT RESERVED.  
The information displayed in the GIS has been taken from Whanganui District Council's databases and maps.  
It is made available in good faith but its accuracy or completeness is not guaranteed. If the information is relied on in support of a resource consent it should be verified independently.

Scale 1: 25000





Wednesday, September 25, 2024

**Disclaimer:**

Digital map data sourced from Land Information New Zealand CROWN COPYRIGHT RESERVED.  
The information displayed in the GIS has been taken from Whanganui District Council's databases and maps.  
It is made available in good faith but its accuracy or completeness is not guaranteed. If the information is relied on in support of a resource consent it should be verified independently.

**Road Evacuation Addresses**

Data sourced from LINZ

LINZ Address	Notes	Date Time Visited	Placard
13 Pukerimu Road, Pkaraka, Whanganui			W Y1 Y2 R1 R2
173 Pukerimu Road, Pkaraka, Whanganui			W Y1 Y2 R1 R2
176 Pukerimu Road, Pkaraka, Whanganui			W Y1 Y2 R1 R2
216 Pukerimu Road, Pkaraka, Whanganui			W Y1 Y2 R1 R2
228 Pukerimu Road, Pkaraka, Whanganui			W Y1 Y2 R1 R2
254 Pukerimu Road, Pkaraka, Whanganui			W Y1 Y2 R1 R2
286 Pukerimu Road, Pkaraka, Whanganui			W Y1 Y2 R1 R2
327 Pukerimu Road, Pkaraka, Whanganui			W Y1 Y2 R1 R2
446 Pukerimu Road, Pkaraka, Whanganui			W Y1 Y2 R1 R2
446A Pukerimu Road, Pkaraka, Whanganui			W Y1 Y2 R1 R2