

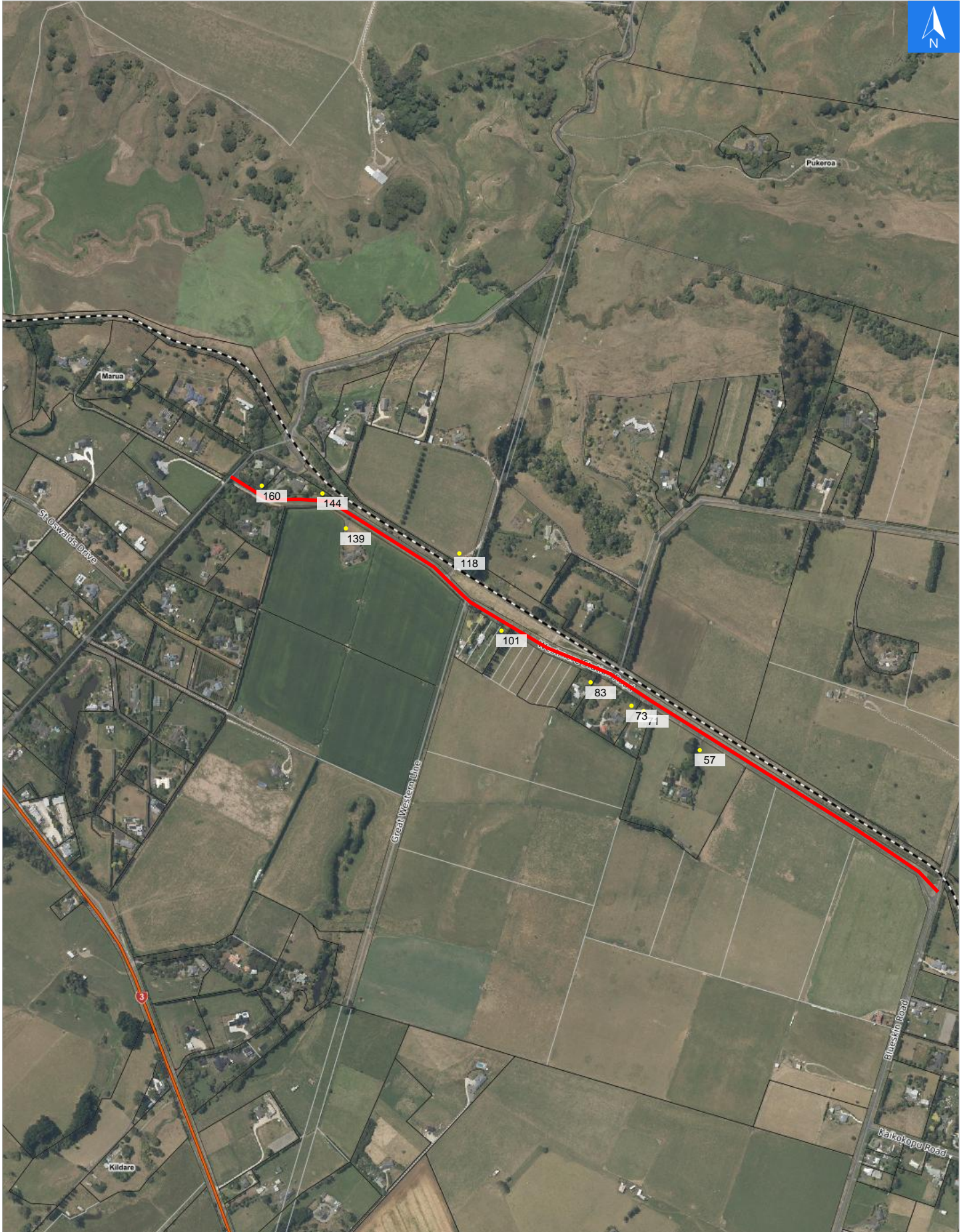


Wednesday, April 22, 2026

Disclaimer:

Digital map data sourced from Land Information New Zealand CROWN COPYRIGHT RESERVED.  
The information displayed in the GIS has been taken from Whanganui District Council's databases and maps.  
It is made available in good faith but its accuracy or completeness is not guaranteed. If the information is relied on in support of a resource consent it should be verified independently.

Scale 1: 10000





**Wednesday, April 22, 2026**

**Disclaimer:**

Digital map data sourced from Land Information New Zealand CROWN COPYRIGHT RESERVED.  
The information displayed in the GIS has been taken from Whanganui District Council's databases and maps.  
It is made available in good faith but its accuracy or completeness is not guaranteed. If the information is relied on in support of a resource consent it should be verified independently.

**Road Evacuation Addresses**

Data sourced from LINZ

<b>LINZ Address</b>	<b>Notes</b>	<b>Date Time Visited</b>	<b>Placard</b>
57 Westmere Station Road, Brunswick			W Y1 Y2 R1 R2
71 Westmere Station Road, Brunswick			W Y1 Y2 R1 R2
73 Westmere Station Road, Brunswick			W Y1 Y2 R1 R2
83 Westmere Station Road, Brunswick			W Y1 Y2 R1 R2
101 Westmere Station Road, Brunswick			W Y1 Y2 R1 R2
118 Westmere Station Road, Brunswick			W Y1 Y2 R1 R2
139 Westmere Station Road, Brunswick			W Y1 Y2 R1 R2
144 Westmere Station Road, Brunswick			W Y1 Y2 R1 R2
160 Westmere Station Road, Brunswick			W Y1 Y2 R1 R2